

RHODES VILLAGE

SOUTHERN DRAKENSBERG, EASTERN CAPE



*Nestled deep within
a secluded valley,
a timeless idyll
awaits ...*





WELCOME TO RHODES

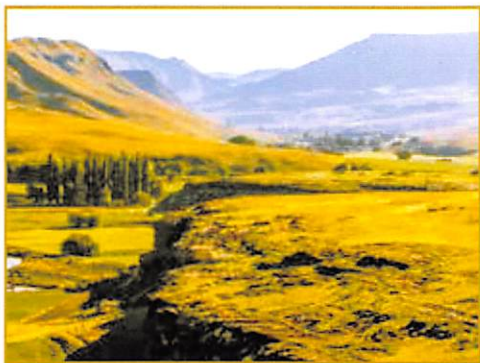
OFTEN CONSIDERED as one of the jewels of the Southern Drakensberg, Rhodes Village is a unique mountain paradise tucked away high in a valley carved by the Bell River and surrounded by magnificent mountain ranges. The village is as far from the mayhem of city life as one could ever hope to be. Rhodes is the personification of peacefulness and it is the true resting place for every soul in search of tranquillity. Here the air is pristine and filled with raucous birdsong that gushes from every tree lining the verdant streets; the lively rivers sparkle in their purity beneath a sapphire blue sky; at night the ancient land crouches beneath a canopy of coruscating stars strewn in abundance across the unfor-

gettable sight of a brilliant Milky Way. Apart from its unique natural beauty, Rhodes has much to offer those who come with an adventurous spirit.

FLY FISHING

THE AREA IS ONE of the country's premier fly-fishing destinations with well-stocked streams throughout the network of local and neighbouring valleys. Many of the rivers and streams originate at 9000 – 10 000 ft above sea-level and can be described as pristine, freestone and rock-based highland streams. Among the most popular are the Bell River, Kraai River, Bokspruit, Riflespruit, Sterkspruit, Kloppershoekspruit, Vlooiakraalspruit





array of indigenous wild flowers. “The Common” comprising the original Tintern Farm on which Rhodes was established is open to the public for quick hikes leading to unparalleled views across the Bell Valley and the Village itself. All other hiking takes place on privately owned farms requiring permission from the respective farmers. Some farmers do not allow access to their farms.

It is worth emphasising that there are no rescue facilities in Rhodes, and all hiking is done entirely at one’s own risk. Rhodes weather is notoriously fickle and all seasons may be experienced in one day. The onus is on hikers to be suitably equipped for the outing.

and Langkloof River. These rivers have had wild spawning rainbow and brown trout thriving in them for almost a century. The dams in our area are well known for producing strong fighting, trophy trout. Loch Ness near Tiffindell Ski Resort is 2555m above sea-level and is the highest self-sustaining still water in Southern Africa, i.e. the Rainbow trout spawn in the dam’s feeder streams. Fly fishing at Loch Ness is an experience of note. For serious fishermen and women, the village hosts the annual Wild Trout Festival in March every year.

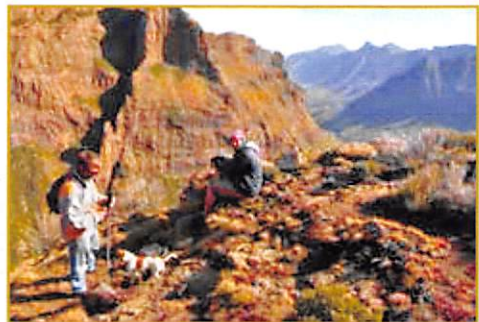
HIKING

RHODES OFFERS AN UNRIVALLED hiking environment through its many valleys or mountains surrounding the Village, with stunning views across the escarpment, rock pools to swim in, waterfalls, crystal clear streams for drinking water, and grasslands boasting an

MOUNTAIN BIKING

THE HIGH-ALTITUDE GRAVEL roads and steep passes around Rhodes makes this a premier destination for mountain bikers. Whether you are just out for a ride or prepared to compete in one of the gruelling high-altitude competitive challenges – this is the adrenalin-junkie’s destination of choice.

Rhodes has some of the best mountain-bike routes in the country and the village played host to the *Rhodes Xtreme* which was ranked in ‘Best Mountain Bike Rides in South Africa’ as one of the country’s top 20 rides. The area offers challenging high-altitude biking and takes riders back to the roots of true mountain-biking; man alone against the elements with rough, rugged natural tracks and





trails at extreme altitudes. It does not get any tougher, or any more satisfying! For serious mountain-bikers as well as for more leisurely outings, there are few places more challenging, or beautiful, to enjoy on two wheels! Local routes pass by crystal rivers and magnificent, scenic mountain views that makes for one of the most sublime off-road experiences on offer anywhere in the world.

TRAIL RUNNING

WITH ITS BREATHTAKING SCENERY and challenging terrain the Rhodes environs is a runner's paradise. For the hardcore runner, Rhodes plays host to *The Rhodes Trail Run* that takes place in July. This iconic, breathtaking trail run is a unique event in the South African Sports calendar. The first race took place in 1989 and is now run by up to 350 runners who brave the extreme winter conditions of the area. Snow, sleet, icy cold winds and temperatures of up to minus fifteen degrees Celsius set the scene for this gruelling event. It is tailor made for the toughest of runners who, despite these conditions, return year after year to participate in this ultimate challenge of mental and physical endurance.

Other extreme fitness events include the *Maluti 4-day Stage Run and Mountain Bike Challenge* that takes place in April-May, and the *Heaven and Hell Mountain Circuit Run* that takes place in September.



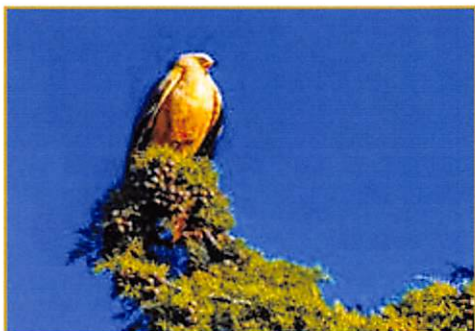
WINTER SKIING

FOR WINTER SPORTSFOLK, the nearby Tiffindell Resort has outstanding facilities for skiing enthusiasts – one of only a few in Africa. Tiffindell plays host to the South African Skiing Championships in August each year. The resort came into existence in 1993, born by avid skiers and run by passionate snow lovers. Since then Tiffindell has grown to become a true Alpine resort for all seasons.

In winter it is all about snow! If Mother Nature doesn't provide it – they do! The high mountain area around Tiffindell is covered in snow for just a few months of the year and is too pure and clean to miss. As a ski resort they have snow machines, ski lifts, a restaurant, ski shop and ski school offering three months of skiing and snowboarding during June, July and August.

BIRD WATCHING

THE MOUNTAINOUS REGION AROUND Rhodes is well known amongst avid bird watchers. With over 230 species in the area, Rhodes is a superb destination for anyone wishing to explore the unique avian wildlife of the Southern Drakensberg. These include high-altitude species such as the the Ground Woodpecker, Orange-breasted Rockjumper and Drakensberg Siskin as well as the Cape Vulture, both Mountain and Yellow-breasted Pipit, Bald



Ibis, Black Stork, Grey Crowned Crane, the Black Harrier and the rare Bearded Vulture (also known as the Lammergeier), which are only found in these parts. An added bonus for keen birdwatchers is that the vicinity is one of the few locations in South Africa where all eight species of chat can be viewed.

However, for those not wishing to travel too far, the Village itself is also home to a vast number of birds. There are breeding pairs of Rufous-breasted Sparrowhawks in the woodland area behind the Village. A local *Gymnogene* (African Harrier-Hawk) breeding pair frequents the treetops and their whistling call is often heard around the Village (see photo above). In addition, Bokmakieries, Turtle Doves, African Red-eyed Bulbuls, Mousebirds, Cape Robin Chats and so many other beautiful birds abound in local gardens. A special sight is the murmuration of Pied Starlings in the summer evenings as they come home to roost in the treetops around Rhodes.

FLOWER TOURS

THE ESCARPMENT AREA AROUND Naude's Neck is a well-known hotspot for indigenous Drakensberg flowers – including rare orchids, high alpine bulbs and endemic mountain flowers. But one can also enjoy some of the indigenous flowers common to the high mountain grasslands throughout the Common adjacent to the Village, and visitors are encouraged to encounter the beauty of the indigenous flora by taking short walks into the Common. Local experts and guides are available to assist in locating the best spots to view this extraordinary natural heritage of the Rhodes mountain region.

KHOI-SAN PAINTINGS

THERE ARE MANY ROCK ART sites within close proximity of the village. The paintings constitute another important aspect of the local heritage. These exquisite images were created by





the San people that lived and hunted in these mountains hundreds of years ago and they are still in good condition. The rock art available for viewing in our area is situated on private farms. It is therefore important to make viewing arrangements via the Rhodes Info Centre. In order to preserve the art a small fee will be charged to visitors. Two of the sites are up the scenic Maartenshoek valley on farms belonging to Rassie and Loekie Smit from the farm Maartinsdel, and Vaasie and Margie Murray from the farm Glass Nevin. Viewings at Buttermead farm should be made directly with Gawie and Susanne Naudé.

HORSE RIDES

WHAT BETTER WAY COULD there be to explore the beauty of the natural landscape around Rhodes than on horseback? Rhodes offers pre-arranged horse/pony rides on an hourly basis. The animals are well trained and suitable for experienced and inexperienced riders alike. Guides can be arranged to take the more adventurous riders on trails, or to lead children and assist inexperienced riders.

FARM VISITS

Shearing Season in Rhodes

WHY NOT ARRANGE TO VISIT one of the local farms to learn about this exciting profession. One of the highlights is visiting during

sheep-shearing season. Because of the cold climate farmers only shear once a year. This produces a very good quality and length of wool and local sheep farmers produce a total of 1.2 million kilograms of wool (1200 tons) annually. Another popular time to visit farms is during the lambing season at the end of winter. Farm visits can be arranged through the Rhodes Information Centre.

OTHER ATTRACTIONS

THERE ARE SPECIAL EVENTS throughout the year for visitors to enjoy, including: the famous 'Steopsitfees' in February, the Church Bazaar at Easter time, the Country Market at Christmas as well as other summer events during the December and January holidays.

For rest, rejuvenation and an unforgettable adventure, there are few destinations to compare with the uniqueness of Rhodes Village.





ULTIMATE 4 x 4 COUNTRY

FOR 4X4 ENTHUSIASTS, one could not hope for a better environment to test one's mettle (and vehicle) against the tough, rough and adrenalin-pumping terrain around Rhodes. There are numerous passes in the area, including the highest in the country – Naude's Nek. But most challenging of all is the high gravel road that dwindles into a mere rocky track between Tenahead and Tiffindell close to the Lesotho Border. Some of the passes are straightforward, but others like the Bastervoetpad and Volunteershoek passes can be a considerable challenge – especially during the summer after heavy rains! Why not attempt our mountain passes, landmarks and national monuments, but please ensure to check road and weather conditions before embarking on your journey:



BARKLY PASS – ELLIOT TO BARKLY EAST:

Barkly Pass is the only tarred road on the 8 passes circuit. The sandstone buttresses and rock formations are magnificent.

NAUDE'S NEK – MACLEAR TO RHODES:

A summit of over 2,920m above sea level, Naude's Nek Pass was the highest dirt road in South Africa before the opening of the Ben MacDhui pass at 3001m.

CARLISLESHOEK PASS – RHODES TO TIFFINDELL SKI RESORT:

You don't need 4 x 4 in dry conditions, but you do need controlled power, particularly where the cement strips zigzag their way up the most extreme section.

VOLUNTEERSHOEK PASS – TIFFINDELL SKI RESORT TO WARTRAIL:

After traversing the high plateau, the Carlislehoek Pass winds its way down to Wartrail. The road is narrow with some precipitous drop-offs.

JOUBERT'S PASS – LADY GREY TO BARKLY EAST VIA THE WITTEBERG:

The third highest pass in South Africa, Joubert's Pass traverses the Witteberg Mountains in a scenic loop. Recommended for 4x4 only.

LUNDEAN'S NEK – WARTRAIL TO TELEBRIDGE LESOTHO BORDER POST:

The scenery is nothing short of spectacular. Lundean's Nek connects this part of the Eastern Cape to the Lesotho border at Telebridge. You will pass the remote Lundean's Nek police station. Just beyond the police station the summit provides fantastic panoramic views of the Maloti Mountains.

OTTO DU PLESSIS – CLIFFORD TO IDA:

Whilst still on the tar road between Lady Grey and the Clifford turn-off it is possible to see part of the unique railway linking Barkly East with Lady Grey to the north-west. Owing to the mountainous terrain, a system of eight 'reverses' was incorporated into the line, which has a gradient of 1 in 36, one of only two such systems in the world.

BASTERVOETPAD – BARKLY EAST/ ELLIOT TO UGIE:

This spectacularly scenic road links the top of Barkly Pass to Ugie and combines technical driving with stunning views. Of all the passes, Bastervoetpad is the most challenging and suitable for 4x4 only.



View from the top of the newly-established Ben MacDhui pass – currently the highest altitude summit pass in South Africa, at 3001 metres

BOTTELNEK PASS – 25KM NORTH OF ELLIOT

A very steep, gravel pass, 5.1 km long with an altitude variance of 193 metres to summit at 2204m above sea level producing an average gradient of 1:26 with the steepest sections being at 1:5. In wet weather non 4WD vehicles will have traction issues. It snows regularly on this pass during winter and the usual snow-driving cautionaries apply. Although this pass can be driven in a normal sedan, we would rather recommend a high clearance vehicle and definitely a 4x4 in rainy or muddy conditions.

KRAAI RIVER PASS – ON THE R58 BETWEEN BARKLY EAST AND LADY GREY

The 10 km long tarred pass descends steadily through majestic mountain scenery to cross the Kraai River at approximately the halfway point. This is a well engineered road, but speed limits should be adhered to. Dangerous in snow/ice.

KARRINGMELKSPRUIT/ BENJAMINSHOOGTE PASS – ON THE R58 BETWEEN BARKLY EAST AND LADY GREY

This tarred pass follows a natural kloof into the north-west, which later follows the Karringmelkspruit (Butter Milk Stream) valley, as it descends from the high mountains in the east from Glen Doone and Lupela Lodge. On the left hand side of the road is the well known (now defunct) 6 part rail reversing sections, which can be seen from the pass.

ESPACHSBERG PASS – NORTH EAST OF BARKLY EAST

A very rough mountain pass with an elevation of 2,183 metres.

PITSENG PASS – SHORTCUT FROM RHODES TO MOUNT FLETCHER

In good conditions the pass can be driven in any high-clearance vehicle, but in wet weather or snow a 4x4 will definitely be required. The road is often used as a shortcut between Mount Fletcher and Rhodes; it is a much shorter route than going via Maclear and it is certainly more scenic. Either way, Naude's Nek still has



Some of the beautiful scenery along the way to Naude's Neck.

to be negotiated. There is a significant height gain / loss of 368 metres, and the pass is 8 kilometres in length.

POTRIVIER PASS – BETWEEN RHODES AND MOUNT FLETCHER

A gravel pass which can turn into a giant mud bath after rain/snow.

MOORDENAARS NEK PASS – ON THE R56 BETWEEN MACLEAR AND MOUNT FLETCHER

This tarred pass has an unusual profile in that the road rises and falls through a series of false summits over its full length of 12.3 km. As usual, hazards in this part of the Eastern Cape include pedestrians, livestock and slow-moving traffic. It is also not advisable to traverse this pass at night or in inclement weather, but if this is unavoidable, reduce your speed to below the posted speed restrictions and be prepared to brake suddenly at a moment's notice.

BEN MACDHUI

The highest altitude summit in South Africa at 3001m. It replaces the previous record holder, the Sani Pass [2876m]. This is a new road which has recently

been opened. The pass comprises three distinct sections:

1. The access road to the Tiffindell Ski Resort.

2. The maintenance track for the ski-lift.

3. A two spoor jeep track from the highest ski-lift pylon to the summit point

This is an out and back route and a high clearance 4x4 with low range is needed to complete this drive. Not recommended in severe weather and especially not accessible when snowing. The pass traverses private property and it is necessary to sign in at the Tiffindell office before you proceed up the pass.

LOCH BRIDGE – OFF THE R58 TOWARDS NEW ENGLAND

This national monument, and site of 3 railway reverses, was named after the governor of the Cape Colony when it was opened in 1893.

The route once carried all traffic to Lady Grey, but is now a back route to New England, used chiefly by those wanting to see the railway reverses up the mountain beyond it.



VILLAGE LIFE AND HISTORY

RHODES IS A THRIVING community of writers, artists, musicians, craftsfolk, gardeners and plantsmen. Being a fairly isolated community, self-reliance is a mainstay, but residents are always willing to help each other and to help visitors where they can. The nearest basic shops are in Barkly East – a 120km round trip on a challenging gravel road, so one is always advised to bring what you need. Local supplies are available from the Rhodes Information Centre, small shops in Zakhele, Rubicon as well as at the Alpine Swift complex. Just ask – one will be surprised what can be obtained in the village itself, even though it lacks a formal village shop!

Most visitors and home owners come to enjoy the peace and quiet of the village and its environs, and to be sociable around some of the venues in the village itself. **The Rhodes Art Gallery** is a good place to start, found at the entrance to the village on the left to view and purchase the works of resident artists, as well as crafts and antiques. While you are there, pop into the adjacent **Plant Nursery** that sells indigenous plants and flowers

grown in Rhodes from seeds and cuttings obtained in the wild in the area. Most of the flowers are sought after in gardens around the country.

Further down Muller Street one can visit **The Clay Cafe** and enjoy a cup of tea or coffee on the veranda while organising special sessions where visitors can make their own ceramic objects and artworks.

The **Bizarre-Bazaar** is open in the old hotel on most days and sells a variety of crafts, clothing and artworks as well as items from the local wool works.

Further along travellers are invited to visit the **Information Centre** for a cup of coffee or tea while finding out specific details of all the activities in the village, including the best accommodation for overnight stays. The Info Centre also stocks basic grocery supplies and clothing to purchase. All bookings for tours, activities and accommodation can be made there. For fly-fishing enthusiasts, one can pay a visit to the *Linecasters* outlet in Main Street for fly-fishing paraphernalia.

Other facilities and activities are listed in the Directories further on.



The residents of Rhodes are proud of the history and heritage of their village and are keen to preserve its important historical character. This Victorian-era Village was declared a conservation area in Government Gazette no. 18152 on 25 July 1997, giving it National Monument status. Many of the homes date from that era and new buildings are constructed to maintain the architectural harmony of the village.

PIONEERS IN THE BELL VALLEY

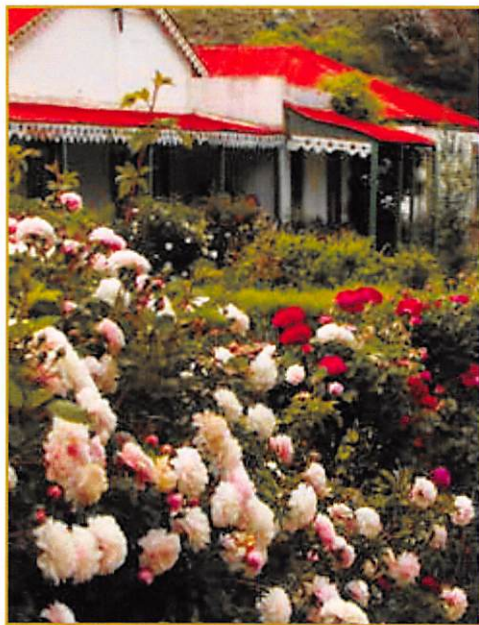
The area itself has been inhabited since the late nineteenth century. Pioneering farmers settled the more remote areas of the Highlands of the Eastern Cape in the 1880s. Prior to this, the only inhabitants of this inhospitable region were seasonally migratory members of the San tribe. They, at least, were sensible enough to follow the exodus of most game species out of the mountains during the harsh winter months!

A land surveyor, Joseph Orpen and his brother Richard laid out farms in the Barkly East district and parts of the Herschel area. The origins of Rhodes lie in the establishment of agricultural activities and the concurrent development of the Dutch Reformed Church in the region. The Village was founded on the farm Tintern that belonged to a Mr Jim



Vorster. Vorster agreed to the establishment of the village on condition that 100 plots be sold and that it be named after the then Prime minister of the Cape, Cecil John Rhodes (1853-1902). A Mr Shaw of Sauer & Osmond duly sold the plots and Rhodes was founded on 16 September 1891. The rest of the farm was given to the village as commonage.





THE HAND OF HERBERT BAKER

Early records show that schooling started in 1894 with 45 pupils. By 1895, Rhodes boasted the largest school in the Barkly East district with 67 pupils. By 1912, this had increased to 90. In February 1916, a process to acquire land for a school was started. By the 6th of March 1918, the "Rhodes Education Site" was given to the village for the construction of a school. Sir Herbert Baker allegedly designed the school building, completed in 1924. Baker left the Cape Colony in 1902 and South Africa for New Delhi in 1913 which was some three years before the good citizens of Rhodes started agitating for a formal school premises and facility. His partners Kendall and Morris or possibly Kendall on his own may well have designed it. Baker, Kendall and Morris had a partnership until 1920 when Baker resigned. Kendall & Morris continued to practise until 1925 when Morris left. A boarding school was started in about 1915 in the old Ginsberg Hotel run by Mr H Venter in 1905. It burnt down during its use as a hotel and was rebuilt to become the school hostel. Its hostel function ceased with the closure of the school. It became a family home with its heyday in the so-called "Hippie era" of the late 70s and early 80s. It was then used as a base station for the Tiffindell Ski Resort construction team and is the site on which Walkerbouts Inn was established in 1996. By 1928 there were 112 pupils and teachers with classes being given up to Standard 8. By the 1940s the number of pupils declined to 70 and by 1947 there were only 30 to 40 pupils with 3 teachers. By 1948, Standard 6 was the highest pupils could aspire to and by 1967 there were only 20 pupils in attendance. The school finally closed in 1974.

RURAL LEGENDS ABOUT PINE TREES

Another rural legend has it that Rhodes acknowledged the village being named after him by way of a donation of a wagonload of

Rural legend has it that the village was first named Rossville. However, extensive academic research has revealed that there is no evidence of a name change from Rossville to Rhodes.

BUILDING A COMMUNITY

On the 15th June 1892, the cornerstone of the Dutch Reformed Church was laid. The population of the Village at this time was estimated at between 250 and 300 people. The construction of the church was soon followed by that of the Post Office, Court Room and Gaol complex that was completed in 1898 at a cost of the princely sum of 558 pounds 14 shillings and 10 pence. Construction of the Naude's Nek Pass was started in 1895 on the advice of Stephanus Naude of the farm Dunley who was the first person to cross the mountain range with an oxwagon. Heavy snowfalls during the Anglo-Boer War stopped construction and the pass was completed in 1905 under the direction of engineer Alfred Bain. The old wagon route can still be seen in places.



trees; it is not likely these were the legendary trees of Rhodes.

REDISCOVERING A RURAL IDYLL

Rhodes is a remote village, almost frozen in time, a relic from the past and a living record of the trials and tribulations of the surrounding farming community. The unique nature of the architecture finds its origins in the Victorian era and is a compromise between fashion, availability of materials and practicality. Houses range from grand traders' residences to flat-roofed 'kerk-huisies' used as town houses in days gone by when travelling to the village, mostly on horseback, from the surrounding farms was a major outing. These buildings are sprinkled amongst tree-lined streets and all contribute to the quaint charm of the atmosphere. The village endured several phases starting off as a direct result of the agricultural activities in the area including 29 invasions during the Anglo-Boer War. In the course of the previous century, agricultural fortunes gradually declined until the village became almost derelict by the late 70s. It was "discovered" at this time by a group of people seeking an alternative lifestyle. This period was referred to as the Hippie era and a multitude of legends surround it.

pine trees. Early photographs of the village as well as the life span of the species concerned debunk this charming anecdote. However, records show that 1 pound 17 shillings and 3 pence was paid to the Barkly East Municipality for pine trees (*Pinus insignis*). Botanically speaking these trees have a lifespan of approximately 70 years. Some can still be seen in the village which adds weight to an alternative theory regarding the origin of the





ACCOMMODATION DIRECTORY

RHODES TOURIST & INFO CENTRE

For all information concerning tours, trips, accommodation and general bookings in Rhodes.
Tel: 045 971 9003
contact@rhodesinfo.co.za
www.rhodesinfo.co.za

AMANZI EMPILO BUNGALOW, SWALLOWS NEST CHALET & HIGH ALTITUDE TRAINING ACCOMMODATION

Self-catering accommodation 4km from Rhodes on the Naudesnek Road.
1 Chalet ideal for a romantic getaway; 1 Rondawel ideal for a romantic getaway; 6 Rooms with communal kitchen, dining-room and lounge, fireplaces; Natural swimming pool, gym & tennis court.
Hylton: 072 529 2747
Sunelle: 082 460 3151
hylton@alpineswiftrails.co.za
www.alpineswiftrails.co.za

BEZRES

Dinner, Bed & Breakfast and home-cooked meals.
Jan: 084 270 8374
jan@btmail.co.za
www.bezres.co.za

BIRKHAL COTTAGE

Single-bedroomed open-plan cottage 40km from Barkly East, overlooking the Sterkspruit River and Birkhall dam. Sleeps 2 - 3.
Catering on request.
Carrien: 082 454 1553
045 974 9303
carrien.birkhall@gmail.com
www.gateshead.co.za

BRANKSOME LODGE

Charming farmhouse 44km from Barkly East, 200m from the Sterkspruit River; 5 Bedrooms, 2 Bathrooms. Sleeps 13. Catering on request.
Carrien: 082 454 1553
045 974 9303
carrien.birkhall@gmail.com
www.gateshead.co.za

EKSODUS HALL

Backpackers Accommodation in Rhodes Village. Communal kitchen/dining-room. Male and female bathrooms. Own bedding & towels required. Sleeps 23.
Tel: 045 971 9003
contact@rhodesinfo.co.za
www.rhodesinfo.co.za

FRANSHOEK GUESTFARM

Our guestbook says it all! 40km from Rhodes towards Barkly East. Self-catering comfortable farm accommodation. Catering on request. Sleeps 16.
Tel: 045 971 9043,
Gerrie: 072 684 0031
gerrie.dutoit@yahoo.com

GATESHEAD LODGE

Nestled on a 2000 hectare farm 78km from Barkly East overlooking the Bokspruit River. 3 Bedrooms, 1 bathroom. Solar lighting and heating, no electricity. Sleeps 8. High clearance vehicles advisable, 4X4 when wet.
Catering on request.
Carrien: 082 454 1553
045 974 9303
carrien.birkhall@gmail.com
www.gateshead.co.za

KINMEL GUEST FARM

2 Comfortable, fully equipped, 3-bedroomed self-catering chalets in a beautiful farm setting 1.6km from Rhodes on the Naudesnek Road. Sleeps 16-20.
Willem: 082 789 5519
Fax: 086 647 0730
willem@kinmel.co.za
www.kinmel.co.za

LONGHOLM FARM ACCOMMODATION

MAARTENSHOEK Large Farmhouse: Sleeps up to 18.
Sandra Reeders: 084 867 8174

MOUNT NEVIN GUEST FARM

Spacious, rustic self-catering farmhouse 6km from Rhodes on the Naudesnek Road. 4 Bedrooms, 1 bathroom Sleeps 11. High clearance vehicles advisable.
Vicky-Lee: 072 405 4618
merinohoeke@nokwi.co.za

OLD STONE HOUSE

Self-catering holiday lodge with incredible views on the Barkly East/Elliot Road, 38km from Rhodes 4 Bedrooms, 2 bathrooms. Coal stoves for cooking, heating and hot water as well as a gas stove for cooking, paraffin lamps. Generator for electricity. Sleeps 8 (up to 20 on stretchers & mattresses).
Philip & Deidre: 045 974 9232
082 706 1676
deidre@barkly.co.za

ORLANDO'S LAIR

Self-catering holiday lodge on Upper Kelvin Grove Farm with breathtaking views over the Kraai River 30km from Rhodes towards Barkly East Solar and gas, no electricity 3 bedrooms and loft with 6 mattresses. Sleeps 12. High clearance vehicles advisable.
Meloney: 045 974 9259
072 500 1356
meloney@dingie.co.za

PARK GATE GUEST FARM

Original farmhouse in a magnificent setting on the Bell River. Main house: 4 Bedrooms, 3-en suite, large lounge with Jetmaster, separate dining room and kitchen. Electricity and serviced daily. Sleeps 9. Separate cottage with 1 bedroom (double and single beds). Sleeper couch in lounge. Own bathroom. Sleeps 4.
Hannelie: 045 974 9269
082 920 7919



ACCOMMODATION DIRECTORY

RHODES CAMPING GROUND

Rhodes Village: Sleeps Plenty! Ablutions with hot showers No electricity.
Sivuyile Kula, Senqu:
084 771 8245
064 006 8176

RHODES COTTAGES

17 Charming self-catering cottages situated in the village of Rhodes as well as an exclusive farm-stay on the Bokspruit River.
Jill: 072 4994 569
045 9749 298
rhodescottages@outlook.com
www.linecasters.co.za

RHODES RESERVATIONS

Bookings for various cottages in Rhodes Village. Pet and Biker friendly.
Elizma: 083 659 3271
edh@cnx.co.za

RHODES RETREATS & HIKING

Self-catering farm or village accommodation Den Hagen Farm comprises original farmhouse (the oldest in the Carlislehoek Valley) & 3 cottages. Sleeps 2 - 22. Stunning hikes & views 7km from Rhodes / 14km from Tiffindell.
The Hobbit in Rhodes Village is an early "dorpshuis". 2 Bedrooms en-suite, private back stoep & garden Private parking. Sleeps 2 - 7.
Roger: 082 358 8712
Judy: 082 451 3258
info@rhodesretreats.co.za
www.rhodesretreats.co.za

RUBICON ACCOMMODATION, RESTAURANT, PUB & CONFERENCE FACILITIES

The original historical sandstone school. Self-catering & catered accommodation. Family and Biker friendly
Elizma: 083 659 3271
edh@cnx.co.za
www.rubiconflats.co.za

SKI HUT & SNOW SPORT ACCOMMODATION

Backpacker accommodation 4km from Tiffindell Ski Resort. Sleeps up to 32.
Sandra Reeders:
084 867 8174

STEEPSIDE CARAVAN PARK & CAMPSITE

On a farm setting next to the river. 20 km from Rhodes Ablutions with gas geysers, no electricity. Various hiking routes available as well as bushman painting tours. Day visitors welcome
Petrie: 045 974 9245
Cell: 076 600 1041
jordaans@snowvalley.co.za

STEEPSIDE GUESTFARM

2 Fully equipped, self-catering farm cottages with electricity 20km from Rhodes. Sleeps 6 and 7. Catering on request Various hiking routes available as well as bushman painting tours. Day visitors welcome.
Karen: 045 974 9240
Cell: 082 629 3655
steepsides@snowvalley.co.za
www.steepsides.co.za

TENAHEAD MOUNTAIN LODGE & SPA

Naude's Nek Pass. This 5 Star Mountain Lodge with 7 luxury rooms is set 2500m above sea level making it the highest luxury lodge & mountain reserve in South Africa. On-site restaurant and tranquil spar available to in-house guests and day visitors.
Tel. 045 971 8901/2
tenahead@riverhotels.com
www.riverhotels.co.za

TIFFINDELL SKI RESORT

Self-catering chalets and catered luxury suites
Tel: 011 781 2620
045 974 9004/5
reservations@snow.co.za
www.snow.co.za

VREDERUS FARM & TROUT

Just off Naudesnek on the Lower Pitseng Pass. Farm accommodation comprising 2 self-catering cottages. Sleeps 12. Catering on request.
Juan-Marie: 045 932 1572
Cell: 083 465 6699
juan@vrederus.co.za
www.vrederus.co.za

WALKERBOUTS COUNTRY INN & PUB

En-suite catered accommodation and self-catering houses and cottages in Rhodes Village. Pub, Restaurant and Conference Facilities.
Tel: 045 974 9290
E-Fax: 086 465 1701
bookings@walkerbouts.co.za
www.walkerbouts.co.za

BOTHWELL FARMHOUSE

"OFF THE GRID" destination in the "Bokspruit" 25km south east of Rhodes. Affordable and fully functional without electricity, cellphone reception or internet access. Real old fashioned farm style experience and the gas geyser, paraffin lamps, anthracite stove, candles and hot water bottles add to the atmosphere of this unique venue.
5 Bedrooms and 1 bathroom with bath, basin and toilet. Sleeps 10 comfortably.
Caroline: 072 291 5128
045 974 9287
info@lovedaleguestfarm.co.za
www.lovedaleguestfarm.co.za



ACTIVITIES DIRECTORY

RHODES TOURIST & INFO CENTRE

For all information concerning tours, trips, accommodation, mountain bike routes, hiking routes, 4X4 routes, flower tours, rock art, fishing & fishing guides and general bookings in Rhodes.

Tel: 045 971 9003
contact@rhodesinfo.co.za
www.rhodesinfo.co.za

ALPINE SWIFT TRAILS

High-altitude training facility for serious sports people 4km from Rhodes on the Naudesnek Road. Gym, pilates, physiotherapy, massage, hiking routes, natural swimming pool & tennis court.
Hylton: 072 529 2747
Sunelle: 082 460 3151
hylton@alpinewiftrails.co.za
www.alpinewiftrails.co.za

BEN 10 ECO CHALLENGE

Drive ten specific high altitude gravel passes within a time frame of seven days. Note: Some passes not achievable in skiing season and when snowing.
<http://www.mountainpasses.co.za/find-apass/ben10.html>

BRING 'N WINE

November to February (Weather permitting)
Wednesday evenings at The River Park, on Main Street
Bring your own wine, glass & snacks. 17h30 – 19h00.

CLAY CAFE

Local pottery works and ceramics. Pottery lessons and workshops available. Tea, coffee and milkshakes
Irene Walker:
073 833 6068
rhodesclaycafe@gmail.com
Web: www.rhodesclaycafe.wordpress.com

EASTERN CAPE HIGHLANDS CAMINO ROUTE

Scenic 3 days/4 nights hike
Extend your walk to include Tiffindell Alpine Resort and Ben McDhui (3001m). Walks to suit your requirements.
Elizma: 083 659 3271
edh@cnx.co.za

LINECASTERS

Fred Steynberg, professional (REFFIS/THETA approved)
Fly Fisherman and Guide
Cell: 082 640 2930
fred@linecasters.co.za
www.linecasters.co.za

MAARTENSHOEK WEDDING AND FUNCTION VENUE

Unique large cave venue for weddings and functions.
Sandra Reeders:
084 867 8174

ROCK ART TOURS

Tel: 045 971 9003
contact@rhodesinfo.co.za

RHODES RIVER PARK

Riverside recreational park with BMX track and bikes, trampoline, volleyball, mini-soccer and cricket. Picnic area & braai places. Wednesday evening sundowners. Open daily, free of charge
Supervised Children's Hours: 15h00 – 17h00 (Mon to Fri, excluding local school & public holidays).
Sean: 083 327 1724

SANKEY'S CREATIONS

Sharlene's oil, acrylics and water colour paintings. Textile painting, gift cards and craft. Find Sharlene at the Bizarre Bazaar
Cell: 083 357 1112
sankeysharl@gmail.com

TIFFINDELL SKI RESORT

Snow skiing in winter and grass skiing in summer
4X4 info on the Ben10 Eco Challenge and the SA High5, guided bike and quad tours.
Pub and a la carte restaurant
Tel: 011 781 2620
045 974 9004/5
reservations@snow.co.za
www.snow.co.za

TONY'S GUIDED FLY FISHING, WILD FLOWER TOURS AND NURSERY

Tony Kietzman offers guided Fly Fishing on local waters for all levels of experience. He is a local wild-flower expert and conducts guided outings to see the flowers. Visit Tony's nursery situated behind the Art Gallery which specializes in indigenous, roses including heritage roses.
Cell: 082 894 3946
tonykietzman@webmail.co.za

WILD TROUT ASSOCIATION

Fly fishing in the Eastern Cape Highlands. More running water available than one could fish in a lifetime.
Day permits available at the Rhodes Tourist & Info Centre
Tel: 045 971 9003
contact@rhodesinfo.co.za
General info:
dave@wildtrout.co.za
www.wildtrout.co.za



SERVICES DIRECTORY

RHODES TOURIST & INFO CENTRE

Margie Murray:
045 971 9003
contact@rhodesinfo.co.za
http://www.rhodesinfo.co.za

EATERIES & COFFEE VENUES

Tiffindell:

045 974 9004/5
Walkerbouts Inn:
045 974 9290

Tenahead Lodge:

045 971 8901/2

Rubicon Restaurant:

083 659 3271

Bernie's Brewery (Beer
tasting & lunch platters)
083 507 8393

BIRKHAL BUTCHERY

*Local grass-fed, free range
beef, lamb and chicken
including biltong, droewors
and chilli bites. Bulk orders.*
Carlen: 082 454 1553
045 974 9303

RHODES BAKERY

*Bread, speciality breads,
rolls, rusks and specialities*
*Free range eggs, Home-made
meals. Please place orders:*
Mariaan: 082 584 4654
045 974 9273

CAKES, SWEET & SAVOURY TARTS

Please place orders:
Alta: 072 482 0866

DAIZY'S BAKING

*Speciality cakes & biscuits,
shortbread, nougat, truffles
& savoury specialities.*
*Everything and anything
you like.*

Please place orders:
Deidre: 082 706 1676
045 974 9232

HOME-MADE MEALS, PIES, KOEKSISTERS & MILK TARTS

Please place orders:
Lucretia: 082 563 2254

BAKING

Ethel Kraai: 063 442 9224

VETKOEK & MINCE & TRADITIONAL BEER

Nomlindo: 060 407 7143

LAUNDRY & BAKING

Nolubabalo: 073 648 4263

CATERING DECORATIONS, EQUIPMENT HIRE, CLEANING SERVICES, RENOVATIONS & CONSTRUCTION

Xolelwa: 073 797 2003 /
073 767 3623

RHODES MASAKHANE POULTRY PROJECT

073 099 2370 /
073 634 0126

FIRE WOOD SUPPLIES

Theo Welter (local):
072 696 2617

BODY STRESS RELEASE THERAPY

Janita Naser:
072 180 0297

PHYSIOTHERAPY, PILATES & SHOPPING

Sunelle Dunn:
082 460 3151

SEWING

Nonzwakazi Hlalele:
078 834 8419

Iso Lomzi Sewing and Manufacturing Co- operative:

Christina: 082 727 4516

SPINNING, KNITTING & FELTING

Wamkelele Sewing Co- operative

Mavis: 072 824 0856

PETROL & DIESEL EMERGENCY SUPPLY

Sean de Wet:
083 327 1724
Liz de Wet:
082 905 2974

TYPESETTING & DOCUMENT DESIGN

Brendan Cole:
colepressworks@gmail.com

RHODES LIBRARY

Mondays to Fridays
08h00 - 16h30
Nwabisa: 071 098 8513

RHODES GARDEN, BUILDING & MAINTENANCE SERVICES

Maarten: 082 872 0203

LOCAL BUILDING MATERIALS

Alfred: 071 007 7763

RED BRICKS

Falithenjwa Fola Tobi: 063
574 8148

CEMENT BRICKS

Eric Teis: 073 018 6293

RHODES LANDBOUSAAL

Venue hire for weddings
and functions:
045 971 9003

RHODES RIVER MARKET

In season only
Next to Rhodes River Park
on Main Street
Sean: 083 327 1724

THE SHOP @ RUBICON, RHODES

Groceries, meat,
cold drinks, braai packs,
wood, anthracite, coal,
airtime and electricity
Elizma: 083 659 3271

ALPINE SWIFT SHOP

4Km from Rhodes
On the Naudesnek
Road. Groceries, souvenirs,
coffee shop and more
Sunelle: 082 460 3151
Hylton: 072 529 2747

MAMA'S SHOP

Zakhele Rhodes
078 972 7734



SERVICES DIRECTORY

ZAKHELE SPAZA SHOP

Zakhele Rhodes
073 177 7796

DEGRADE SHOP

Zakhele Rhodes
072 860 2781

SOUL'S TUCKSHOP

Zakhele Rhodes
083 238 3460

THABONG TAVERN

Zakhele Rhodes
John: 084 949 7718 /
063 835 2043

KG'S CAR WASH

*Next to Yawa Rhodes Clinic
R45/Car and R30/Motorbike
073 626 9433*

POLICE STATION

*Rhodes Police Station is
open 24 hours
045 974 9001*

DOCTORS (BARKLY EAST)

Dr Christina de Villiers and
Dr Johan Olivier
045 971 0285

DENTIST (BARKLY EAST)

*Tuesday & Thursday mornings
Dr Ngele:
045 971 0285*

DENTIST (ELLIOT)

Dr Amanda Vorster:
045 931 2078

VETERINARY CLINIC (ELLIOT)

073 058 7694

CLOETE JOUBERT HOSPITAL, BARKLY EAST

045 971 0091



RHODES TOURIST AND INFO CENTRE

CONTACT: MARGIE MURRAY

Tel: 045 9719003

Email: contact@rhodesinfo.co.za

Web: www.rhodesinfo.co.za

